



HIGH PRESSURE TECHNOLOGY
COALMAXX>> PIPELINES



Leading technologies

QUALITY, RELIABILITY, VARIETY

Coalmaxx

Coalmaxx» pipes and dedicated fittings are manufactured by WICHARY Technologies since the acquisition of the German company Hamacher in 2011. The transfer of the machinery stock and all documentation of Hamacher products to Poland allowed us to expedite the manufacturing process, lower the costs and have better control over the final product. This measure was taken with the Customer's best interest and quality expectations in mind.

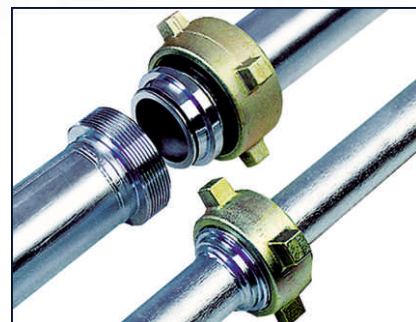
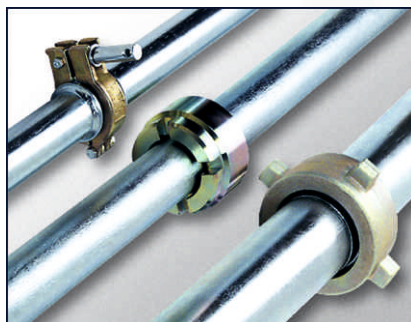
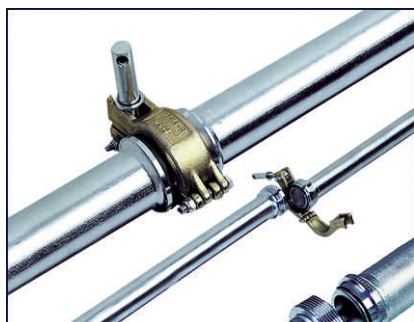
The high-pressure main conduits manufactured by WICHARY Technologies are capable of transmitting liquids categorised as group 2 under "Technical requirements for pressure equipment 97/23/EC". Allowed pipelines may operate with the operating pressure up to 420 bar. Due to the large variety of design solutions, they provide complex solutions for the user's problems with creating pipe mains.

Coalmaxx» high pressure system is currently used mainly in underground mining, ie. with longwall systems, transport of cement – dust mixtures, compressed air pipelines, fire prevention and drainage systems as well as goaf spaces hydraulic backfilling.

Coalmaxx» system can also be used in open-pit mining along with salt and other minerals mining.

High and low pressure pipelines manufactured by WICHARY Technologies may be used in the following branches:

- underground & surface mining,
- chemical industry,
- construction,
- shipbuilding industry,
- metallurgy and steel industry.



- clamp connection - enabling fast system assembly and disassembly,
- threaded connection - characterized by exceptional durability and fastness,
- socket connection – featuring small size and simplicity throughout whole system construction,
- flange connection - with diameters range DN25 – DN300 and pressures PN2,5 up to PN40.

A 3D cutaway diagram of a mechanical assembly. The assembly consists of a central shaft with a gear-like component at one end. A yellow housing or bracket is mounted around the shaft. Four red lines with numbers point to specific parts: 1 points to the outer housing, 2 points to the gear teeth, 3 points to the inner shaft, and 4 points to the mounting bracket.

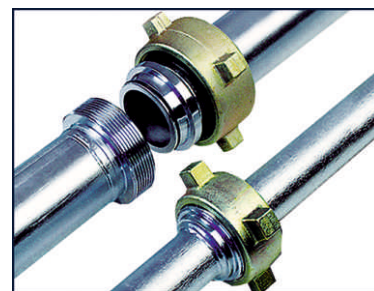
-
- A close-up photograph of a metal flange or pipe fitting. The central feature is a circular opening with a rough, textured interior surface. The flange edge is smooth and metallic. The background is dark and out of focus, showing other industrial components.

3

QUICK ASSEMBLY HIGH PRESSURE PIPELINE

DN 25, 32, 40, 50, 60, 70, 75, 80, 90, 100, 125

PN 320, 350, 400 bar



Coalmaxx>> Pipe

Pipe 0,5; 1,0; 1,5; 2,0; 2,5; 3,0; 5,0 m



Coalmaxx>> Elbow

Elbow 15°, 30°, 45°, 60°, 90°

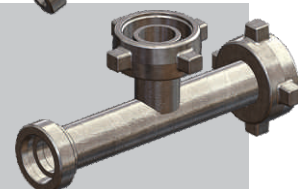


Coalmaxx>> Tee

Tee with Stecko joint DN 32S, 40S, 50SS

Tee with socket joint DK-ÜMU

Tee with threaded joint GEW



Coalmaxx>> Manual ball valve

Manual ball valve



Coalmaxx>> Separating collector

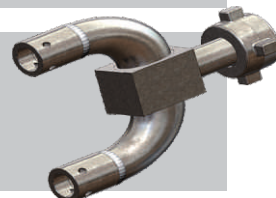
Separating collector 5 x Stecko DN 32S, 40S, 50SS



Coalmaxx>> Distributor

Distributor with socket joint DK-ÜMU for 2 x Stecko DN 32S, 40S, 50SS

Distributor with threaded joint GEW for 2 x Stecko DN 32S, 40S, 50SS



Coalmaxx>> Double-sided connector

Double-sided connector with socket joint DK-ÜMU

Double-sided connector with threaded joint GEW



Coalmaxx>> » Elastic hose

Hose 10, 15, 20 m



Coalmaxx>> Sealing ring

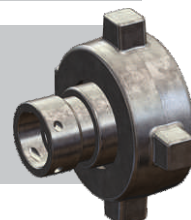
Sealing ring



Coalmaxx>> Intermediate connector

Intermediate connector with socket joint DK-ÜMU for Stecko DN 32S, 40S, 50SS

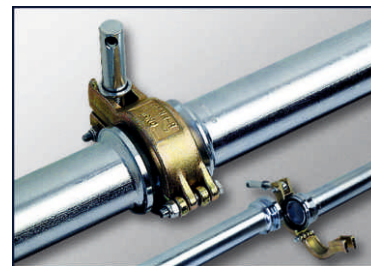
Intermediate connector with threaded joint GEW for Stecko DN 32S, 40S, 50SS



QUICK ASSEMBLY LOW PRESSURE PIPELINE

DN 50, 60, 80, 100, 150

PN 40, 70 bar



Coalmaxx>> Pipe

Pipe 0,5; 1,0; 1,5; 2,0; 2,5; 3,0; 5,0 m

Coalmaxx>> Elbow

Elbow 15°, 30°, 45°, 60°, 90°

Coalmaxx>> Tee

Tee with Stecko joint DN 25, 32, 40, 50

Tee with joint with sealing surface FDB SCHA-KU

Tee with joint with NTB sealing

Coalmaxx>> Fish-plate clamping ring

Fish-plate clamping ring

Coalmaxx>> Separating collector

Separating collector 3 x Stecko DN 25, 32, 40, 50

Coalmaxx>> Distributor

Distributor with sealing surface FDB SCHA-KU for 2 x Stecko DN 32, 40, 50

Distributor with NTB sealing for 2 x Stecko DN 32, 40, 50

Coalmaxx>> Double-sided connector

Double-sided connector FDB SCHA-KU

Double-sided connector NTB

Coalmaxx>> Elastic hose

Hose 10, 15, 20 m

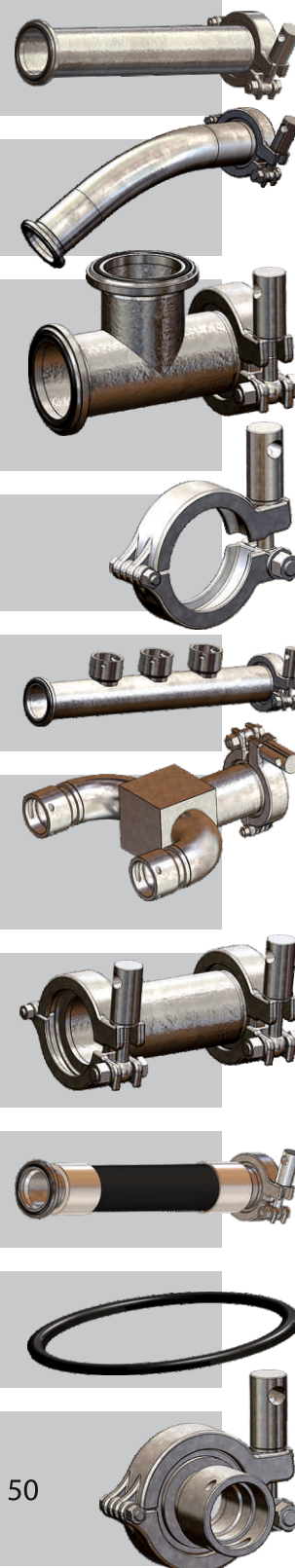
Coalmaxx>> Sealing ring

Sealing ring

Coalmaxx>> Intermediate connector

Intermediate connector with sealing surface FDB SCHA-KU for Stecko DN 25, 32, 40, 50

Intermediate connector with NTB sealing for Stecko DN 25, 32, 40, 50



SLIM LINE

SLIM LINE is a small form joint which, due to its design, is a perfect connection of pipes and elastic hoses for various uses. The Slim Line socket joint with a cylindrical-conical design is sealed with a round ring lubricated with the working medium. Using these simple design solutions allowed us to create a durable and uncomplicated joint.

For quick assembly, put a double joint between the sockets ...



Put the pipe ends on the double joint ...



Secure both ends with a chain: done!



The advantages of using Slim Line joints in pipelines:

1. Low joint wear due to properly secured sealing.
2. Reduced joint size prevent uneven pipe layout during transport and storage.
3. Single type of pipe ends eliminate the need of aligning the pipes for assembly in a certain way.
4. Fast and easy assembly withouts crewing, reducing pipeline assembly time by 30 to 50%.
5. Constant lubrication of the sealing ring ensures longer life of the joint and reduces losses of the working liquid.
6. Easy dismantling of the pipeline or selected element with a special tool. The tool prevents uncontrolled pipe movement and can be operated by just one person.



CERTIFICATES



REFERENCES



WICHARY Technologies Sp. z o.o. reserves the right to change the information provided in this document without a notification. This document does not constitute a commercial offer in view of legal regulations and is published exclusively for information purposes.

The company has an integrated quality management system ISO 9001 and work safety system PN-N18001.

01/07/2018/TG/EN



WICHARY Technologies Sp. z o.o.
42-625 Pyrzowice, ul. Centralna 6, POLAND
phone + **48 32 661 99 00**, fax + **48 32 661 99 99**
www.wichary.eu
wichary@wichary.eu